

# MONTHLY MEMBERSHIP PROGRESS REPORT

LOCATION TEXAS

District 2 X2

Results as of: 2/28/2022

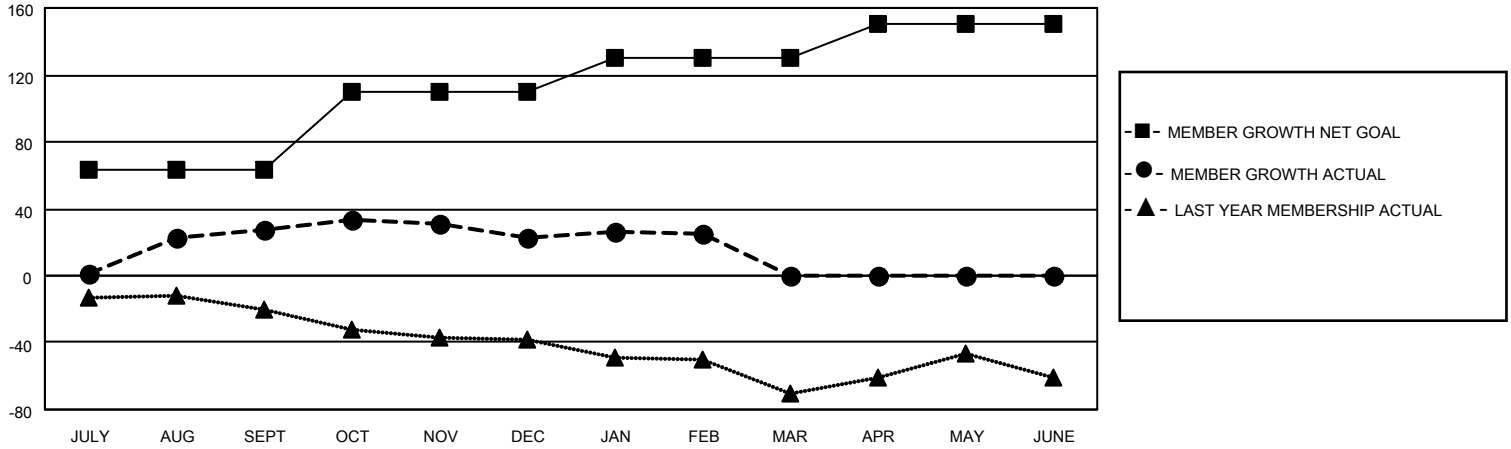
Clubs			
RESULTS FOR 2021-2022			
QUARTER	NEW CLUB GOAL	NEW CLUBS	DROPPED CLUBS
JULY/AUG/SEPT	0	0	0
OCT/NOV/DEC	0	0	0
JAN/FEB/MAR	0	0	0
APR/MAY/JUNE	1	0	0

Members			
RESULTS FOR 2021-2022			
QUARTER	MEMBER GROWTH NET GOAL	MEMBER GROWTH ACTUAL	DROPPED MEMBERS ACTUAL (including transfers)
JULY/AUG/SEPT	63	63	31
OCT/NOV/DEC	47	54	51
JAN/FEB/MAR	20	29	27
APR/MAY/JUNE	20	0	0

**GOALS AND ACTUAL NEW CLUBS CUMULATIVE**



**GOALS AND ACTUAL MEMBERS CUMULATIVE**



**DROPPED CLUBS: 0**

**24 CLUBS OF 39 ADDED 1 OR MORE NEW MEMBERS**

**GENDER DISTRIBUTION**

MALE	575 (57.62%)
FEMALE	423 (42.38%)
NON BINARY	0 (0.00%)
PREFER NOT TO ANSWER	0 (0.00%)

**DROPPED MEMBERS**

[CLICK HERE FOR CUMULATIVE MEMBERSHIP DATA](#)

DECEASED	12
CLUB CANCELLED	0
OTHER	97
<b>TOTAL</b>	<b>109</b>

TOTAL FAMILY UNIT MEMBERS	186
FAMILY MEMBERS PAYING HALF DUES	95